



LOCK & ROLL RETAIL SHELVES ASSEMBLY INSTRUCTIONS
Complete Instructional Guide



Call 815-991-5010 or email us at sales@innovativegrowersequipment.com if you have any questions

INNOVATIVEGROWERSEQUIPMENT.COM

TOOLS NEEDED FOR ASSEMBLY



1/2" SOCKET



**ALLEN
WRENCHES**



1/2" WRENCH



**VACUUM
(SHOP VAC)**



MALLET



**TAPE
MEASURE**



**HAMMER
DRILL W/ BITS**

PARTS LIST

CONFIRM ALL PARTS ARE PRESENT BEFORE STARTING INSTALLATION



**RETAIL DISPLAY
CARRIAGE**



**TRACK AND
INSERT**



**CONTROL ARM
UNITS (LOCKING
AND STANDARD)**



**SHELVING UNIT
(STYLES MAY VARY)**



**FLOOR
ANCHORS**



**5/16 - 18
HEX BOLTS
AND NUTS**



WASHERS



**CARRIAGE
ANTI-TIP**



FOLLOW INSTRUCTIONS BELOW

STEP #1

Located the starting point of the track system.

NOTE: You want to be sure the rack will clear any outlets, fans, water supply, etc. on the back wall of the rack.



STEP #2

Place the aluminum base for tracks on the ground and measure the distance from the wall using a chalk line. Make sure it is square on all four sides.



FOLLOW INSTRUCTIONS BELOW (CONT.)

STEP #3

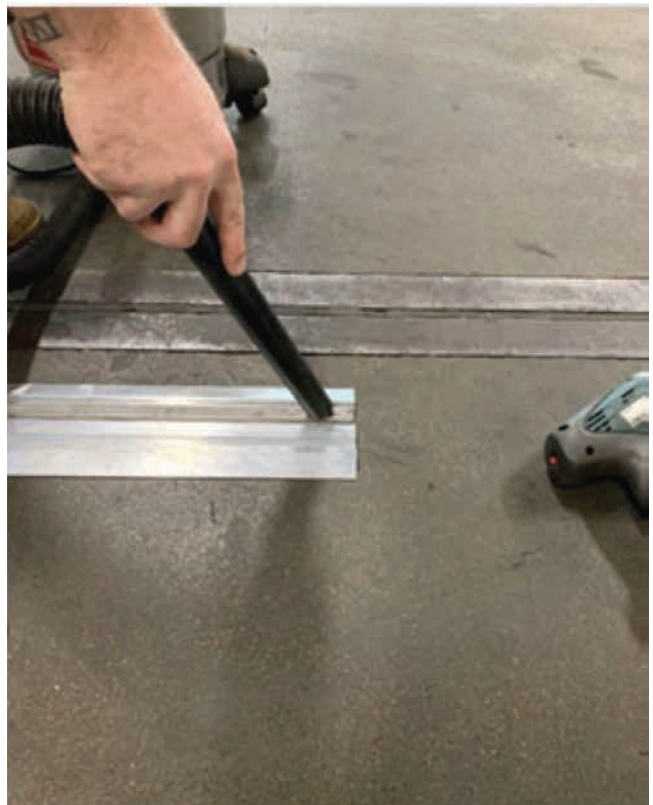
Place 1" steel track into the channel of the aluminum and align the counter sink holes with the holes in the aluminum.

NOTE: If the track is longer than 8', the first aluminum track will be 8', and the first insert will be 4' so that the joints are staggered.



STEP #4

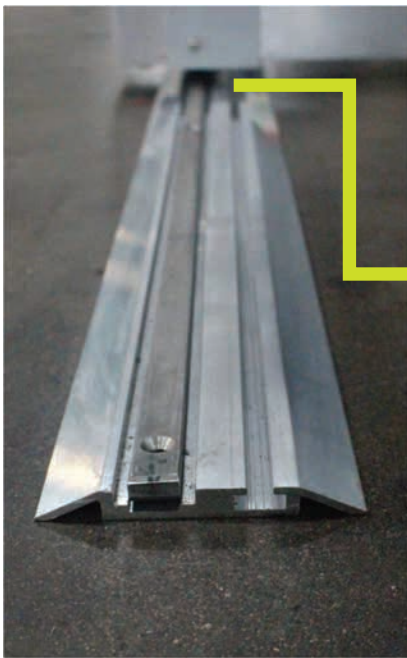
Drill the first and second hole on the first track that was placed on the ground. Make sure to use a vacuum to clean out the track and drilled holes of dust and concrete after drilling.



FOLLOW INSTRUCTIONS BELOW (CONT.)

STEP #5

Take the retail display carriage and place it onto the ground beside the tracks that were just drilled. Make sure they are lined up with the steel wheels on the base and then set into place.



STEP #6

Place the stainless steel anti-tip bracket into the base on the inside and attach to the bolts. A shim or flat head screwdriver is recommended to set a base depth of where it should be, so it does not ride on the track when moving. Adjustments can be made as needed. This step needs to be taken when every base is set into place.

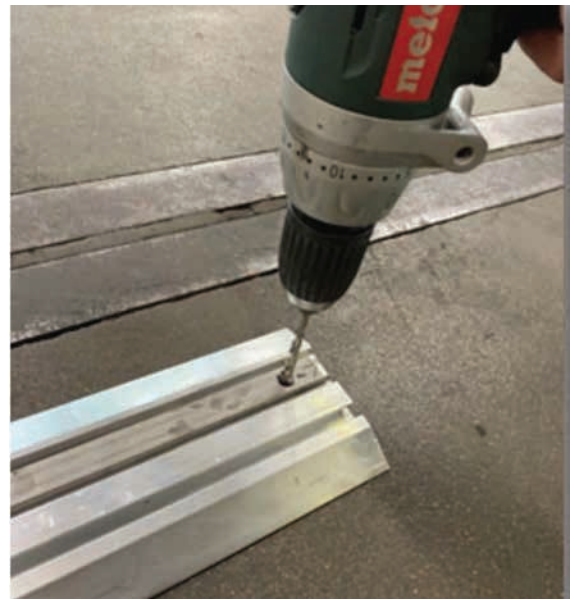
NOTE: The anti-tip should be placed on the inside of the base and not the outside.



FOLLOW INSTRUCTIONS BELOW (CONT.)

STEP #7

When the tracks are lined up, move to the second track that was set down and drill holes into concrete. Make sure to move base close to holes to make sure the alignment to the base and the tracks do not go out of line.



STEP #8

! *Make sure that end carriages have the locking control arm unit!*

Remove cover off the control arm units. Fasten the control arm units to the carriage bases with the provided hardware. Cut the bag with the chain and loop it around the bottom sprocket. Connect the chain together with the provided chain link.



FOLLOW INSTRUCTIONS BELOW (CONT.)

STEP #9

Once the chain is in place, tension can be adjusted with tensioner located inside of the gear box. Chain tension does not need to be set too tight, but enough to make sure there is response between the hand crank and movement of the base. You may put the cover back on when finished. You will be moving onto the assembly of the shelving units ext.

STEP #10

! *You will need a couple of people to help with the assembly of the shelving units.*

! *You will also need a rubber mallet to help secure the brackets in the holes.*

Start with having someone hold the two side pieces and the back piece. Attach the bottom base bracket on the back. Attach one base piece to the front as well.

These shelving brackets will hold the back panel in place.



FOLLOW INSTRUCTIONS BELOW (CONT.)

STEP #11

Attach the top back shelving bracket first. Then attach the top front shelving bracket next. Make sure you use a mallet to secure these into place.



STEP #12

Place one shelf on the top. Space the shelving brackets as you like.





FOLLOW INSTRUCTIONS BELOW

STEP #13

Lift the shelving unit onto the carriage base.



STEP #14

Secure the shelving unit to the carriage with the provided hardware. There are six (6) holes to mount to the carriage.



FOLLOW INSTRUCTIONS BELOW (CONT.)

STEP #15

Place bottom shelf into shelving unit.



STEP #16

Continue adding more shelf brackets, shelf supports and shelves.





FOLLOW INSTRUCTIONS BELOW (CONT.)

STEP #17

Repeat step 10-16 to complete the other units. **!** *Middle units do not have the side panels and will be open on both sides.*





CONGRATULATIONS YOUR LOCK AND ROLL RETAIL SHELVES ARE COMPLETE!

